



OAK TREE POINT | FOR LEASE

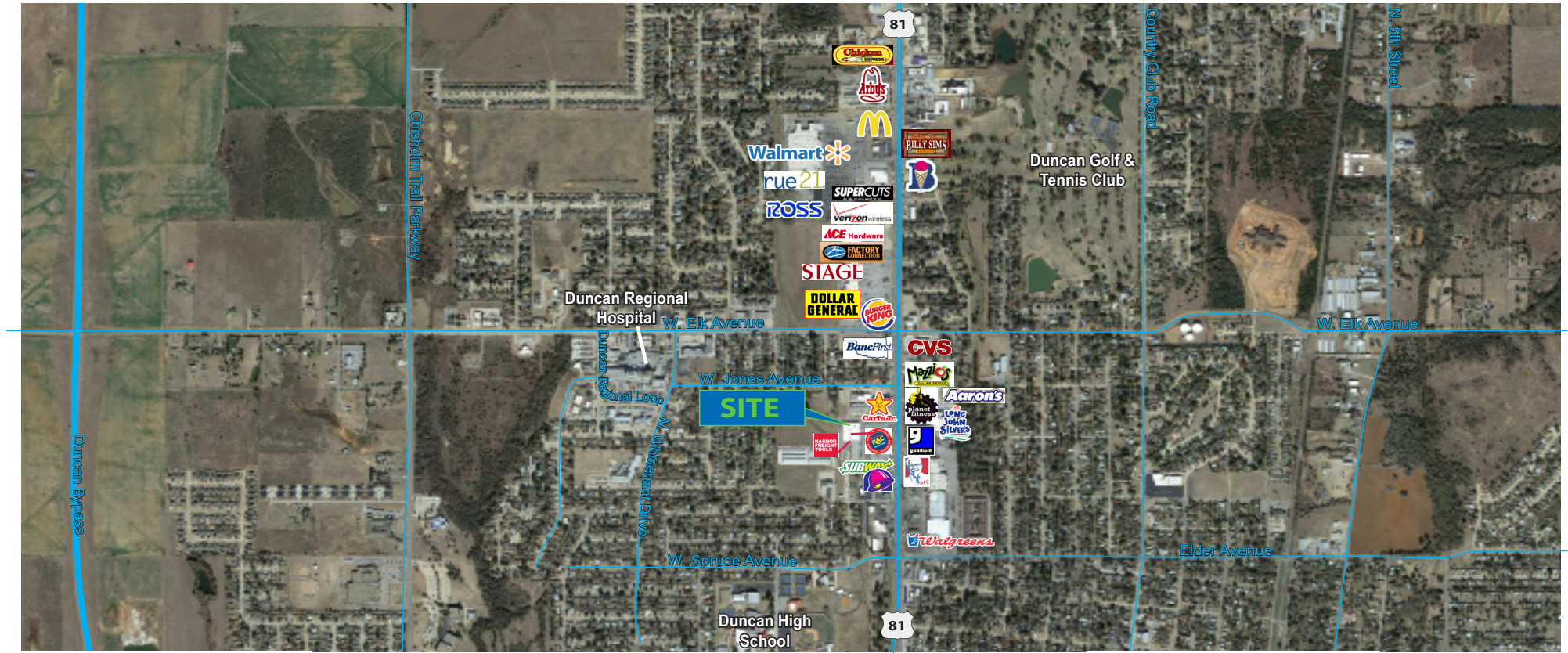
2297 US HWY 81, DUNCAN, OK 73533

MICHAEL ALMARAZ
malmaraz@newmarkrp.com
C: 405.990.9918

LOUIS ALMARAZ
lalmaraz@newmarkrp.com
C: 405.760.4774

NEWMARK
ROBINSON PARK

OAK TREE POINT / FOR LEASE



DETAILS

Suite 2297 Available SF	9,000 SF
Lease Rate	\$9.95/SF
NNN	\$2.40/SF

PROPERTY OVERVIEW

Duncan is the largest community in Stephens County and is just 30 miles east of Lawton. Oak Tree Point is located on North U.S. Highway 81, which is the primary shopping and dining destination corridor for Duncan. There are approximately 1.1 million square feet of surrounding retail, service providers, and restaurants.

SNAPSHOT



Population
3 mi Radius
21,354



Median HH Income
3 mi Radius
\$48,150



Daytime Population
3 mi Radius
10,522



Traffic Count
N HWY 81
20,800 VPD